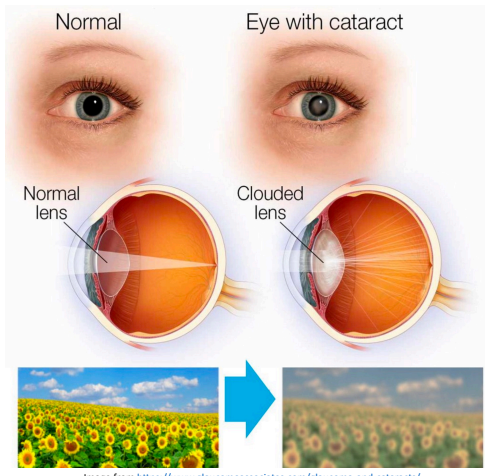


Only **3.5%** of eye surgeons in the USA and Canada currently have access to the **Light Adjustable Lens**.

**Dr. Jiaxi Ding**, founder of **Ascend Eye Center**, is **first** to bring this cutting edge technology into our Piedmont Triad local community.



**UNDERSTANDING YOUR CATARACT SURGERY OPTIONS**



With time, we will **ALL** grow cataracts within the lens of our eyes. It is like the window in the middle of the eye gets dirty. This leads to blurry and foggy vision as well as glare with difficulty driving at night.

Cataract surgery is a common procedure to remove the cloudy lens and replace it with a clear, permanent plastic lens implant (**IOL**). This can help greatly improve your quality of vision and reduce your need for glasses.

This guide will help you understand your lens implant options for cataract surgery.

**NEW** ONLY AVAILABLE AT ASCEND EYE CENTER!

Standard	Toric	Multifocal or EDOF (Extended Depth of Focus)	Light Adjustable Lens (LAL)
✓ Distance vision	✓ Distance vision	✓ Distance vision	✓ Distance vision
⊗ Astigmatism	✓ Astigmatism	✓ Astigmatism	✓ Astigmatism
⊗ Mid-range vision (computer)	⊗ Mid-range vision (computer)	✓ Mid-range vision (computer)	✓ Mid-range vision (computer)
⊗ Near vision (reading)	⊗ Near vision (reading)	✓ Near vision (reading)	✓ Near vision (reading)
⊗ <b>CANNOT</b> adjust implant after surgery	⊗ <b>CANNOT</b> adjust implant after surgery	⊗ <b>CANNOT</b> adjust implant after surgery	✓ <b>CUSTOMIZE</b> your vision <b>AFTER</b> surgery. Test drive up to 3 adjustments made in the office, then finalize your best results
<ul style="list-style-type: none"> <li>◆ Standard option covered by medical insurance</li> <li>◆ Often requires fulltime bifocal glasses for best vision after surgery</li> </ul>	<ul style="list-style-type: none"> <li>◆ <u>Premium</u> option for your best distance vision without glasses</li> <li>◆ Reading glasses needed</li> </ul>	<ul style="list-style-type: none"> <li>◆ <u>Premium</u> option for increased range of vision without glasses</li> <li>◆ May cause glare</li> <li>◆ <b>NOT</b> used with prior LASIK/PRK, glaucoma, macular degeneration</li> </ul>	<ul style="list-style-type: none"> <li>◆ <b>NEWEST premium</b> option for increased range of vision without glasses</li> <li>◆ No glare, crisp vision</li> <li>◆ Compatible with prior LASIK/PRK, glaucoma, macular degeneration</li> </ul>

Your eyes are worth an investment, and we look forward to caring for your vision goals!  
For more information, visit our website [www.ascendeye.com](http://www.ascendeye.com)



"Let's imagine traditional cataract surgery as buying a wedding gown off the rack based off of your usual size measurements. It should fit reasonably but there are always variations. Now, the Light Adjustable Lens is the ultimate customized gown, and I am your tailor to make it fit like a glove!"  
**- Jiaxi Ding, MD -**



*Customize Your*  
**VISION**